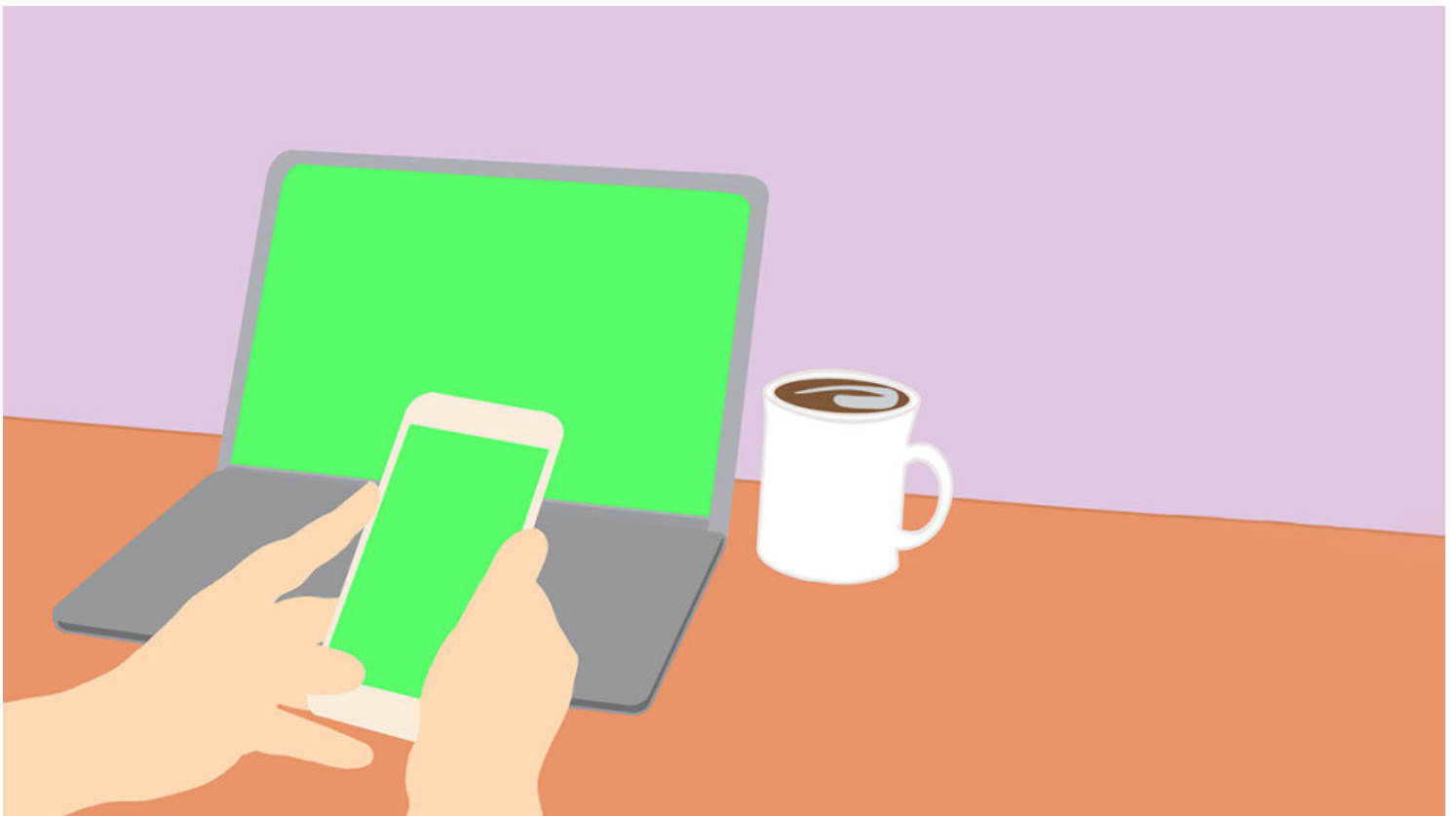


LEADING TEAMS

A Guide to Managing Your (Newly) Remote Workers

by [Barbara Z. Larson](#) , [Susan R. Vroman](#) and [Erin E. Makarius](#)

March 18, 2020



Ada Yakota/Getty Images

In response to the uncertainties presented by Covid-19, many companies and universities have asked their employees to work remotely. While close to a quarter of the U.S. workforce already works from home at least part of the time, the new policies leave many employees — and their managers — working out of the office and separated from each other for the first time.

Although it is always preferable to establish clear remote-work policies and training in advance, in times of crisis or other rapidly changing circumstances, this level of preparation may not be feasible. Fortunately, there are specific, research-based steps that managers can take without great effort to improve the engagement and productivity of remote employees, even when there is little time to prepare.

Common Challenges of Remote Work

To start, managers need to understand factors that can make remote work especially demanding. Otherwise high-performing employees may experience declines in job performance and engagement when they begin working remotely, especially in the absence of preparation and training. Challenges inherent in remote work include:

Lack of face-to-face supervision: Both managers and their employees often express concerns about the lack of face-to-face interaction. Supervisors worry that employees will not work as hard or as efficiently (though research indicates otherwise, at least for some types of jobs). Many employees, on the other hand, struggle with reduced access to managerial support and communication. In some cases, employees feel that remote managers are out of touch with their needs, and thereby are neither supportive nor helpful in getting their work done.

Lack of access to information: Newly remote workers are often surprised by the added time and effort needed to locate information from coworkers. Even getting answers to what seem like simple questions can feel like a large obstacle to a worker based at home.

This phenomenon extends beyond task-related work to interpersonal challenges that can emerge among remote coworkers. Research has found that a lack of “mutual knowledge” among remote workers translates to a lower willingness to give coworkers the benefit of the doubt in difficult situations. For example, if you know that your officemate is having a rough day, you will view a brusque email from them as a natural

product of their stress. However, if you receive this email from a remote coworker, with no understanding of their current circumstances, you are more likely to take offense, or at a minimum to think poorly of your coworker's professionalism.

Social isolation: Loneliness is one of the most common complaints about remote work, with employees missing the informal social interaction of an office setting. It is thought that extraverts may suffer from isolation more in the short run, particularly if they do not have opportunities to connect with others in their remote-work environment. However, over a longer period of time, isolation can cause any employee to feel less “belonging” to their organization, and can even result in increased intention to leave the company.

Distractions at home: We often see photos representing remote work which portray a parent holding a child and typing on a laptop, often sitting on a sofa or living-room floor. In fact, this is a terrible representation of effective virtual work. Typically, we encourage employers to ensure that their remote workers have both dedicated workspace and adequate childcare before allowing them to work remotely. Yet, in the case of a sudden transition to virtual work, there is a much greater chance that employees will be contending with suboptimal workspaces and (in the case of school and daycare closures) unexpected parenting responsibilities. Even in normal circumstances family and home demands can impinge on remote work; managers should expect these distractions to be greater during this unplanned work-from-home transition.

How Managers Can Support Remote Employees

As much as remote work can be fraught with challenges, there are also relatively quick and inexpensive things that managers can do to ease the transition. Actions that you can take today include:

Establish structured daily check-ins: Many successful remote managers establish a daily call with their remote employees. This could take the form of a series of one-on-one calls, if your employees work more independently from each other, or a team call, if

their work is highly collaborative. The important feature is that the calls are regular and predictable, and that they are a forum in which employees know that they can consult with you, and that their concerns and questions will be heard.

Provide several different communication technology options: Email alone is insufficient. Remote workers benefit from having a “richer” technology, such as video conferencing, that gives participants many of the visual cues that they would have if they were face-to-face. Video conferencing has many advantages, especially for smaller groups: Visual cues allow for increased “mutual knowledge” about coworkers and also help reduce the sense of isolation among teams. Video is also particularly useful for complex or sensitive conversations, as it feels more personal than written or audio-only communication.

There are other circumstances when quick collaboration is more important than visual detail. For these situations, provide mobile-enabled individual messaging functionality (like Slack, Zoom, Microsoft Teams, etc.) which can be used for simpler, less formal conversations, as well as time-sensitive communication.

If your company doesn't have technology tools already in place, there are inexpensive ways to obtain simple versions of these tools for your team, as a short-term fix. Consult with your organization's IT department to ensure there is an appropriate level of data security before using any of these tools.

And then establish “rules of engagement”: Remote work becomes more efficient and satisfying when managers set expectations for the frequency, means, and ideal timing of communication for their teams. For example, “We use videoconferencing for daily check-in meetings, but we use IM when something is urgent.” Also, if you can, let your employees know the best way and time to reach you during the workday (e.g., “I tend to be more available late in the day for ad hoc phone or video conversations, but if there's an emergency earlier in the day, send me a text.”) Finally, keep an eye on communication among team members (to the extent appropriate), to ensure that they are sharing information as needed.

We recommend that managers establish these “rules of engagement” with employees as soon as possible, ideally during the first online check-in meeting. While some choices about specific expectations may be better than others, the most important factor is that all employees share the same set of expectations for communication.

Provide opportunities for remote social interaction: One of the most essential steps a manager can take is to structure ways for employees to interact socially (that is, have informal conversations about non-work topics) while working remotely. This is true for all remote workers, but particularly so for workers who have been abruptly transitioned out of the office.

The easiest way to establish some basic social interaction is to leave some time at the beginning of team calls just for non-work items (e.g., “We’re going to spend the first few minutes just catching up with each other. How was your weekend?”). Other options include virtual pizza parties (in which pizza is delivered to all team members at the time of a videoconference), or virtual office parties (in which party “care packages” can be sent in advance to be opened and enjoyed simultaneously). While these types of events may sound artificial or forced, experienced managers of remote workers (and the workers themselves) report that virtual events help reduce feelings of isolation, promoting a sense of belonging.

Offer encouragement and emotional support: Especially in the context of an abrupt shift to remote work, it is important for managers to acknowledge stress, listen to employees’ anxieties and concerns, and empathize with their struggles. If a newly remote employee is clearly struggling but not communicating stress or anxiety, ask them how they’re doing. Even a general question such as “How is this remote work situation working out for you so far?” can elicit important information that you might not otherwise hear. Once you ask the question, be sure to listen carefully to the response, and briefly restate it back to the employee, to ensure that you understood correctly. Let the employee’s stress or concerns (rather than your own) be the focus of this conversation.

Research on emotional intelligence and emotional contagion tells us that employees look to their managers for cues about how to react to sudden changes or crisis situations. If a manager communicates stress and helplessness, this will have what Daniel Goleman calls a “trickle-down” effect on employees. Effective leaders take a two-pronged approach, both acknowledging the stress and anxiety that employees may be feeling in difficult circumstances, but also providing affirmation of their confidence in their teams, using phrases such as “we’ve got this,” or “this is tough, but I know we can handle it,” or “let’s look for ways to use our strengths during this time.” With this support, employees are more likely to take up the challenge with a sense of purpose and focus.

We’ll add our own note of encouragement to managers facing remote work for the first time: you’ve got this. Let us know in the comments your own tips for managing your remote employees.



Barbara Z. Larson is executive professor of management and director of partnerships at Northeastern’s D’Amore-McKim School of Business. Her research focuses on the personal and interpersonal skills that people need to work effectively in virtual environments, and she works with collaborators in both academia and industry to develop training methods and materials to enable more productive virtual work. Prior to her academic career, Professor

Larson worked for 15 years in international finance and operations leadership, most recently as Director of International Finance at R.R. Donnelley.



Susan R. Vroman is a lecturer of management at Bentley University. Her research interests include the impact leadership enactment has on organizational culture and employee engagement, with specific focus on supporting flexible work arrangements. Prior to her academic career, Dr. Vroman worked for over 20 years as an organizational effectiveness and strategic human resource management executive and advisor. She

continues this work in a consulting capacity.



Erin E. Makarius an associate professor of human resources in the management department of the College of Business Administration at the University of Akron and received her Ph.D. from The Ohio State University. Dr. Makarius has several years of experience in human resources and management, including working at and consulting with a variety of companies in the financial, insurance, and consumer products industries. Her research interests include boundary spanning in the form of technological, international, and organizational boundaries, with emphasis on the role of relationships and reputation in these processes.

This article is about **LEADING TEAMS**

Follow This Topic

Related Topics: [Motivating People](#)

Comments

Leave a Comment

Post Comment

16 COMMENTS

Jim K. 19 hours ago

Companies are struggling with the transition. There are companies like Bluetie that will walk you through the process and are offering remote access, email, video conferencing, etc. for free, which is nice, because a lot of these companies are seriously going to struggle. Good luck to you all!

Reply

1 0

[Join The Conversation](#)

POSTING GUIDELINES

We hope the conversations that take place on HBR.org will be energetic, constructive, and thought-provoking. To comment, readers must sign in or register. And to ensure the quality of the discussion, our moderating team will review all comments and may edit them for clarity, length, and relevance. Comments that are overly promotional, mean-spirited, or off-topic may be deleted per the moderators' judgment. All postings become the property of Harvard Business Publishing.